

Airblast Equipment Spares Accessories



Dear Sir / Madam

Thank you for your interest in our products. This catalogue outlines the alpha-blast range of airblast equipment, spare parts and accessories.

Everyone involved in the manufacturing or service industries will be well aware of the constant changes in their work place and markets. But the one thing that always remains the same is the search for new and better products at lower prices. To satisfy this demand we manufacture and supply innovative quality products at the lowest possible cost.

Apart from items manufactured by the companies we represent, all our equipment is designed and manufactured by ourselves and through a select team of sub contractors.

Our ambition is to maintain your continual business. To achieve this we will only ever sell quality products. Our products are tried and tested in the field under real life work site conditions. During manufacture all components are test fitted and QC sampled to ensure strict quality control. In the odd event that a product does have a fault, our 1 year warranty will cover its replacement free of charge.

We look forward to the opportunity of working with you for all your requirements for airblast equipment, spare parts and accessories.

Sincerely

alpha-blast
Blast & Peen Services Pte Ltd
10 Admiralty Street #02-69
North Link Building
Singapore 757695
T: +65 6505 9098
F: +65 6245 8785
W: www.alpha-blast.com
E: sales@alpha-blast.com
Business/GST Reg.200415563N

<u>item</u>	<u>page</u>
Remote Control Valves	1 - 3
Deadman Control Handles	4 - 5
Abrasive Metering Valves	6 - 8
Pop Up Valves / Gaskets & Washers	10
Hose Fittings	11 -13
Blast Nozzles	14 - 18
Blast Hose	19
Moisture Separator	20
NOVA3 Blasting Helmet	21 - 22
NOVA2000 Blasting Helmet	23 - 24
Astro Blasting Helmet	25 -26
T100 Series Painting Respirator	27 - 28
Breathing Air	29 - 30
Operator Safety Equipment	31 - 32
SuperFlow Blasting Pot	33
Blasting Pot	34
FatBoy Blasting Pot	35
Easy-Vac Abrasive Recovery	36
Portable Ventilator	37



Compact Remote Valve. Lightweight, sturdy and reliable the alpha-blast Compact Remote Valve is an air operated inlet/exhaust valve which is easily retro fitted to existing blast pots in place of other bulky remote control systems and allows quick start and stop response to the remote control handle.

Simple and reliable this control valve is suitable for use with all abrasive and blast pot set up types.

pt. no.	description
301001	Compact Remote Valve
301010	Compact Remote Valve - Repair Kit
301437	Compact Remote Valve Exhaust Pad - Pkt 3



RAV125 Combination Inlet/Outlet Valve. The RAV125 Combination Valve allows for ease of installation and maintenance with only one valve requiring removal for quick change over of respective diaphragms, gaskets and o rings, meaning down time is kept to an absolute minimum. Supplied complete with exhaust silencer.

pt. no.	description
301004	RAV125 Combination Inlet/Outlet Valve c/w Silencer
301011	RAV125 Combination Inlet/Outlet Valve - Repair Kit



RAV125 Inlet Valve. The blasting industries favourite remote control valve. Simple springless design ensures continuous reliable service for thousands of cycles. Removable end caps provides quick and simple access to the valve interior for servicing. Fitment of mini ball valve allows the valve to be deactivated in case of emergency.

Use in conjunction with RAV125 Outlet Valve.

pt. no.	description
301002	RAV125 Inlet Valve
301104	RAV125 Inlet/Outlet Interconnecting Hose



RAV125 Outlet Valve. The blasting industries favourite remote control valve. Simple springless design ensures continuous reliable service for thousands of cycles. Removable end caps provides quick and simple access to the valve interior for servicing. Exhaust air noise is greatly reduced by fitment of silencer to top cover.

Use in conjunction with RAV125 Inlet Valve.

<u>pt. no.</u>	<u>description</u>
301003	RAV125 Outlet Valve
301100	RAV Outlet Valve Manifold



RAV50 Mini Combination Inlet/Outlet Valve. The RAV50 Mini Combination Valve allows for ease of installation and maintenance with only one valve requiring removal for quick change over of respective diaphragms, gaskets and o rings, meaning down time is kept to an absolute minimum. Supplied complete with exhaust silencer.

Same reliable design as the RAV125 Inlet/Outlet Valve but fitted with 1/2" threaded ports for fitment to smaller blast pots.

<u>pt. no.</u>	<u>description</u>
301171	RAV50 Mini Combination Inlet/Outlet Valve c/w Silencer



Combination Valve. This valve is a one piece normally closed air inlet and outlet valve. A short length of blast hose is used for the blow down function that eliminates any abrasive coming into contact with the valve. As no abrasive passes through the valve there is no wear on the valve thus providing years of trouble free service.

Large internal bore reduces air pressure loss through the valve which results in less pressure drop at the nozzle.

<u>pt. no.</u>	<u>description</u>
301005	Combination Valve
301012	Combination Valve - Repair kit



Auto Air Valve. Utilized in conjunction with the Normally Closed Valve, the alpha-blast Auto Air Valve is ideal for use with multiple outlet and bulkblast machines and provides the on/off supply of compressed air to the pusher line to allow independent operation or blow down function.

pt. no.	<u>description</u>
301173	Auto Air Valve - 19mm 3/4" ports
301006	Auto Air Valve - 25mm 1" ports
301007	Auto Air Valve - 32mm 1.25" ports
301108	Auto Air Valve - 38mm 1.5" ports
301225	Auto Air Valve - 50mm 2" ports



RAV Exhaust Silencer. Reduce the noise of the compressed air exiting the blast pot when depressurising. Simple lightweight screw on design allows quick and easy replacement when worn out.

pt. no.	<u>description</u>
301009	RAV Exhaust Silencer



RAV Pneumatic. The alpha-blast RAV Pneumatic remote control handle is lightweight, tough and reliable and is used in combination with a blast pot remote valve and up to 40 meters of twinline hose.

The handle will only activate once the operator makes a deliberate two step action to fold down the safety lock and pushes down the lever.

<u>pt. no.</u>	<u>description</u>
301013	RAV Pneumatic Remote Control Handle
301018	RAV Pneumatic Remote Control Handle - Repair Kit
301347	RAV Pneumatic Remote Control Handle Rubber (10)



RAV Electric. When using blast hoses over 40 meters long the RAV Electric remote handle will provide instant activation of the pot remote valve and eliminate the delay encountered with pneumatic handles. The handle operates on 12VDC supply.

The handle will only activate once the operator makes a deliberate two step action to fold down the safety lock and pushes down the lever.

<u>pt. no.</u>	<u>description</u>
301014	RAV Electric Remote Control Handle
301348	RAV Pneumatic Remote Control Handle - Repair Kit



CRV Pneumatic. This non air bleed type deadman handle is recommended for use with the Combination Valve. The internal 3 way normally closed valve provides a fast activation and deactivation response time.

The handle will only activate once the operator makes a deliberate two step action to press in the safety button and push down the lever.

<u>pt. no.</u>	<u>description</u>
301015	CRV Pneumatic Remote Control Handle



Dual Switch. Manufactured from tough polyurethane, the internal wiring is fully encased in silicon sealant after assembly to provide a reliable, longlasting handle.

The Dual Switch electric remote control handle is ideal for use with blast pots with valves configured for blasting and blow down. When blasting the lever is depressed to open the pusher line air valve and the abrasive metering valve. When blow down is required the lever is raised up to open only the pusher line air valve allowing the operator to remove excess dust and abrasive from the work piece.

<u>pt. no.</u>	<u>description</u>
301219	Dual Switch Electric Deadman Handle



Twinline Hose. alpha-blast Twinline Hose is manufactured from a tough rubber compound suitable for use in the harsh working environment of abrasive blasting.

The Twinline Hose is available in lengths of 10, 20 and 40 meters. For blasting hose lengths in excess of 40 meters we recommend the use of electric remote controls.

<u>pt. no.</u>	<u>description</u>
301022	Twinline Hose - 10m Long
301023	Twinline Hose - 20m Long
301024	Twinline Hose - 40m Long
301098	Extension Twinline Hose - 20m Long
301368	Twinline Hose - 100m Long no fittings



Blasting Light. The perfect solution for blasting in areas with poor visibility, such as inside and under ship blocks and inside tanks. Powered by a 12VDC LED lamp this cost effective solution will make a huge difference in productivity.

Instead of guessing where they should blast, and consequently blasting areas already blasted, the operators will blast only in the correct areas; saving time, abrasive consumption and energy.

<u>pt. no.</u>	<u>description</u>
301093	Blast Light Assembly c/w lamp & 3.5m wire 12 VDC
301094	Blast Light Glass



Abrasive Saver Valve. Reduce abrasive consumption and save money. The alpha-blast Abrasive Saver Valve will save a fortune in wasted abrasive. The screw in plunger permits very accurate adjustment to allow just the right amount of abrasive to the blast nozzle.

The valve is ideally suited to all fine abrasive types, ie glass beads, garnet, aluminium oxide, plastic media, ceramic bead etc.

To reduce maintenance costs the valve internals are made from tungsten carbide, hardened steel and polyurethane.

<u>pt. no.</u>	<u>description</u>
301026	Abrasive Saver Valve
301034	Abrasive Saver Valve - Repair Kit
301137	Abrasive Saver Valve Urethane Sleeve
301136	Abrasive Saver Valve Pipe Nipple 1.5" x 1.25"
301226	Abrasive Saver Valve Pipe Nipple 1.5" x 1.5"
301227	Abrasive Saver Valve Pipe Nipple 1.25" x 1.25"



Normally Closed Valve. The perfect valve for instant start/stop blast nozzle activation. Ideally suited for multiple outlet blast machines the Normally Closed Valve allows each operator independent blasting on/off control of their nozzle.

The Normally Closed Valve can also be utilised to allow abrasive cut off giving the operator an air only blow down feature, very handy in blast room scenarios to ensure valuable abrasive does not leave the room with the work piece.

<u>pt. no.</u>	<u>description</u>
301027	Normally Closed Valve Tungsten Carbide - 1.25"
301029	Normally Closed Valve Urethane - 1.25"
301036	Normally Closed Valve Tungsten Carbide - Repair Kit
301037	Normally Closed Valve Urethane - Repair Kit
301224	Abrasive Saver Valve Seal Kit
301131	Abrasive Saver Valve Pipe Nipple 1.25" x 1.25"
301129	Abrasive Saver Valve Pipe Nipple 1.5" x 1.5"



Sand Valve. The alpha-blast Sand Valve is the perfect valve for metering expendable abrasives, ie garnet, crushed glass and minerals slags to the blast nozzle.

The 45 degree free flow design of the valve ensures a consistent uninterrupted abrasive flow which results in higher productivity and less abrasive wastage.

In case of foreign particle blockage the Sand Valve is fitted with a removable clean out plate to provide quick easy access and reduce maintenance downtime.

<u>pt. no.</u>	<u>description</u>
301025	Sand Valve
301033	Sand Valve - Repair Kit



Mini Sand Valve. The Mini Sand Valve is designed for use on smaller sized blast pots and is fitted with 0.5" threaded ports.

Internal plate and stem are manufactured from stainless steel to increase valve life. Precise metering of all abrasive types is achieved with this valve to reduce abrasive wastage.

<u>pt. no.</u>	<u>description</u>
301172	Mini Sand Valve



Pinch Valve. Tough, simple and reliable the alpha-blast Pinch Valve is used to shut off abrasive and air flow in the blast hose as it leaves the abrasive metering valve. Simple pneumatic operation and minimal moving parts ensure reliable continuous operation.

As no abrasive actually passes through the valve there is nothing to wear out or fail. Once the portion of blast hose passing through the valve wears out it is simply replaced with a new section.

<u>pt. no.</u>	<u>description</u>
301101	Pinch Valve



Isolator Valve. The alpha-blast Isolator Valve is a great maintenance time saving device. Fitted above the abrasive metering valve it permits the metering valve to be removed from the blast pot for service, without the need to empty the abrasive from the pot, which saves a huge amount of time.

The alpha-blast Isolator Valve is particularly useful for bulk blasters and multiple outlet blast pots as it allows each individual abrasive metering valve to be removed from the pot without affecting the other outlets. Fitted with 1.5" ports to ensure unrestricted abrasive flow.

<u>pt. no.</u>	<u>description</u>
301217	Isolator Valve



pt. no.	<u>description</u>
301037	Pop Up Valve Cone Top Stem
301039	Pop Up Valve Cone Top External Sleeve
301040	Seating Ring - Large
301099	Pop Up Valve Mini
301228	Seating Ring Mini



pt. no.	<u>description</u>
301086	Stepped Nozzle Washer 25mm - pkt 10
301087	Stepped Nozzle Washer 32mm - pkt 10
301090	Coupling Gasket - Gunmetal and Steel Coupling
301091	Coupling Gasket - Nylon Coupling Small - pkt 10
301092	Coupling Gasket - Nylon Coupling Large - pkt 10



Nylon Nozzle Holder. Light weight, yet extremely tough, alpha-blast nylon nozzle holders provide quick and easy attachment of blast nozzles to the blast hose.

Precision injection moulding ensures very tight dimensional accuracy. Fitted with an internal raised thread the alpha-blast nylon nozzle holder fits tightly and securely to the blast hose. The combination of the internal raised thread and air pressure inside the blast hose ensures the nozzle holder will not disengage from the blast hose.

Being manufactured from a flexible nylon compound the nozzle holder will return to its original shape even after being knocked or accidentally impacted.

pt. no.	description
301056	Nylon Nozzle Holder #1 - 38mm (1.5") ID.
301057	Nylon Nozzle Holder #2 - 48mm (1.875") ID.
301058	Nylon Nozzle Holder #3 - 54mm (2.187") ID.



Aluminium Nozzle Holder. Light weight, yet extremely tough, alpha-blast aluminium nozzle holders provide quick and easy attachment of blast nozzles to the blast hose. Ideal for use where knocking or damage is likely to occur.

Precision cast alloy moulding ensures tight size accuracy. Fitted with an internal raised thread to ensure tight and secure fitting to the blast hose.

pt. no.	description
301060	Aluminium Nozzle Holder #1 - 38mm ID. Contractor.
301061	Aluminium Nozzle Holder #2 - 48mm ID. Contractor.
301062	Aluminium Nozzle Holder #3 - 54mm ID. Contractor.
301306	Aluminium Nozzle Holder #1/2 - 34mm ID. Fine.
301307	Aluminium Nozzle Holder #1 - 38mm ID. Fine.
301308	Aluminium Nozzle Holder #2 - 48mm ID. Fine.
301309	Aluminium Nozzle Holder #3 - 54mm ID. Fine.



Nylon Hose Coupling. Lightweight, yet extremely tough, alpha-blast nylon hose couplings provide quick and easy attachment of the blast hose to the blast pot, or another blast hose.

Precision injection moulding ensures very tight dimensional accuracy. Fitted with an internal raised thread the alpha-blast nylon hose coupling fits tightly and securely to the blast hose. An integral spring locking pin locks into the mating coupling and prevents the couplings accidentally separating.

Being manufactured from a flexible nylon compound the hose coupling will return to its original shape even after being knocked or accidentally impacted.

pt. no.	description
301063	Nylon Hose Coupling #1 - 38mm (1.5") ID.
301064	Nylon Hose Coupling #2 - 48mm (1.875") ID.
301065	Nylon Hose Coupling #3 - 54mm (2.187") ID.



Metal Hose Coupling. The toughest of all couplings, alpha-blast metal hose couplings are available in a variety of materials to meet specific needs. Corrosion resistant gun metal provides excellent strength and service life for most general purpose applications.

In applications where the risk of explosion must be eliminated, as far as is possible, the alpha-blast brass couplings offer a non-sparking solution.

pt. no.	description
301068	Gunmetal Hose Coupling #1 - 38mm (1.5") ID.
301069	Gunmetal Hose Coupling #2 - 48mm (1.875") ID.
301070	Gunmetal Hose Coupling #3 - 54mm (2.187") ID.
301300	Brass Hose Coupling #1 - 38mm (1.5") ID.
301301	Brass Hose Coupling #2 - 48mm (1.875") ID.
301302	Brass Hose Coupling #3 - 54mm (2.187") ID.
301438	Steel Hose Coupling #1 - 38mm (1.5") ID.
301071	Steel Hose Coupling #2 - 48mm (1.875") ID.
301439	Steel Hose Coupling #3 - 54mm (2.187") ID.



Threaded Coupling. alpha-blast threaded couplings are available in a variety of materials to meet specific needs. When used in steel grit blasting applications the gun metal threaded couplings will provide maximum durability.

In applications where the risk of explosion must be eliminated, as far as is possible, the alpha-blast brass couplings offer a non sparking solution.

Precision investment casting to ensure quality repeatability with CNC machined internal threads with safety pin holes.

pt. no.	description
301073	Gunmetal Threaded Coupling - 1.25" BSP.
301074	Gunmetal Threaded Coupling - 1.5" BSP.
301304	Brass Threaded Coupling - 1.25" BSP.
301305	Brass Threaded Coupling - 1.5" BSP.
301223	Steel Threaded Coupling - 1.25" BSP.
301440	Steel Threaded Coupling - 1.5" BSP.



Air Hose Fittings. Inadequately secured or loose compressed air hoses are dangerous to operators, and air leaks waste money. Most cases of blown off air hoses are caused by the use of cheap inferior quality clamps and hose tails that are not up to the job required for blast cleaning.

alpha-blast compressed air fittings are designed and manufactured specifically for connecting compressed air hoses onto blasting pots.

Hose tails are fitted with a ring groove for the clamp to lock into to prevent the hose pulling off. The hose clamps contain 4 fastening bolts and are manufactured from tough SG Iron. Integral gripping rings ensure a tight grip around the hose.

pt. no.	description
301236	hose tail 0.75"
301237	hose tail 1"
301238	hose tail 1.25"
301239	hose tail 1.5"

pt. no.	description
301241	hose clamp 0.75"
301242	hose clamp 1"
301243	hose clamp 1.25"
301244	hose clamp 1.5"



Tungsten Carbide Nozzle. Recognised as the industry standard for general blasting applications alpha-blast tungsten venturi nozzles are extremely durable for use in applications where rough handling is unavoidable, providing maximum resistance to impact or flexing.

alpha-blast tungsten carbide long venturi nozzles are particularly suitable for use with steel abrasives, expendable slag abrasives and crushed glass.

The wide throat entry design increases productivity by up to 15% compared to standard venturi nozzles.

Available encased in a tough aluminium jacket or protected by soft shock absorbing nylon jacket that allows easy access into and out of the nozzle holder. Fitted with 50mm contract thread.

pt. no.	description
301175	#3 Tungsten Carbide Aluminium Jacket 4.8 mm bore
301075	#4 Tungsten Carbide Aluminium Jacket 6.4 mm bore
301076	#5 Tungsten Carbide Aluminium Jacket 8 mm bore
301077	#6 Tungsten Carbide Aluminium Jacket 9.5 mm bore
301078	#7 Tungsten Carbide Aluminium Jacket 11 mm bore
301079	#8 Tungsten Carbide Aluminium Jacket 12.7 mm bore
301176	#10 Tungsten Carbide Aluminium Jacket 16 mm bore
301177	#12 Tungsten Carbide Aluminium Jacket 19 mm bore
301140	#3 Tungsten Carbide Nylon Jacket 4.8 mm bore
301141	#4 Tungsten Carbide Nylon Jacket 6.4 mm bore
301142	#5 Tungsten Carbide Nylon Jacket 8 mm bore
301143	#6 Tungsten Carbide Nylon Jacket 9.5 mm bore
301144	#7 Tungsten Carbide Nylon Jacket 11 mm bore
301145	#8 Tungsten Carbide Nylon Jacket 12.7 mm bore
301146	#10 Tungsten Carbide Nylon Jacket 16 mm bore
301147	#12 Tungsten Carbide Nylon Jacket 19 mm bore



Silicon Carbide Nozzle. Silicon carbide venturi nozzles offer a longer lasting light weight alternative to tungsten carbide. The 50% weight reduction relieves operator fatigue and provides higher productivity.

alpha-blast silicon venturi nozzles are particularly suitable for use with steel abrasives, expendable slag abrasives, garnet and crushed glass.

The wide throat entry design increases productivity by up to 15% compared to standard venturi nozzles.

Encased in a tough shock absorbing nylon jacket that allows easy access into and out of the nozzle holder. Fitted with 50mm contract thread.

pt. no.	<u>description</u>
301148	#3 Silicon Carbide Nylon Jacket 4.8 mm bore
301149	#4 Silicon Carbide Nylon Jacket 6.4 mm bore
301150	#5 Silicon Carbide Nylon Jacket 8 mm bore
301151	#6 Silicon Carbide Nylon Jacket 9.5 mm bore
301152	#7 Silicon Carbide Nylon Jacket 11 mm bore
301153	#8 Silicon Carbide Nylon Jacket 12.7 mm bore

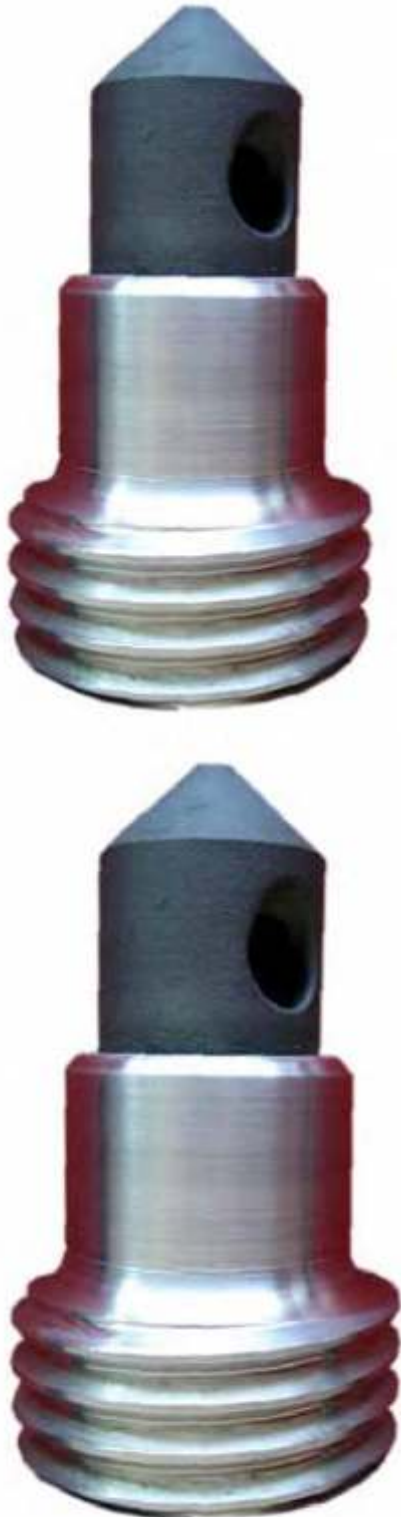


Syclone Carbide Nozzle. Syclone venturi nozzles are extremely wear resistant and will provide twice the life of equivalent silicon carbide nozzles. Weighing 50% less than tungsten nozzles, the weight reduction relieves operator fatigue and provides higher productivity.

alpha-blast syclone venturi nozzles are particularly suitable for use with aggressive abrasives such as aluminium oxide and silicon carbide.

The wide throat entry design increases productivity by up to 15% compared to standard venturi nozzles. Encased in a tough shock absorbing nylon jacket that allows easy access into and out of the nozzle holder. Fitted with 50mm contractor thread.

<u>pt. no.</u>	<u>description</u>
301321	#4 Syclone Carbide Nylon Jacket 6.4 mm bore
301322	#5 Syclone Carbide Nylon Jacket 8 mm bore
301323	#6 Syclone Carbide Nylon Jacket 9.5 mm bore
301324	#7 Syclone Carbide Nylon Jacket 11 mm bore
301325	#8 Syclone Carbide Nylon Jacket 12.7 mm bore



Angle Nozzle. alpha-blast angle nozzles are designed to increase productivity in inaccessible and hard to reach areas, ie behind beams, inside pipes, around lattice etc.

Instead of depending on rebounding and ricocheting abrasive to reach the inaccessible areas the use of alpha-blast angle nozzles allows the operator to blast directly onto the part. This increases blasting speed and also produces the correct surface profile.

The durable combination of a tungsten carbide liner and 50mm contractor thread aluminium outer jacket ensures the angle nozzle is not easily damaged whilst in use.

<u>pt. no.</u>	<u>description</u>
301197	#2 Single Outlet Angle Nozzle 3.2 mm bore
301198	#3 Single Outlet Angle Nozzle 4.8 mm bore
301299	#4 Single Outlet Angle Nozzle 6.4 mm bore
301200	#5 Single Outlet Angle Nozzle 8 mm bore
301201	#6 Single Outlet Angle Nozzle 9.5 mm bore
301202	#8 Single Outlet Angle Nozzle 12.7 mm bore
301203	#2 Double Outlet Angle Nozzle 3.2 mm bore
301204	#3 Double Outlet Angle Nozzle 4.8 mm bore
301205	#4 Double Outlet Angle Nozzle 6.4 mm bore
301206	#5 Double Outlet Angle Nozzle 8 mm bore
301207	#6 Double Outlet Angle Nozzle 9.5 mm bore
301208	#8 Double Outlet Angle Nozzle 12.7 mm bore
301209	#2 Triple Outlet Angle Nozzle 3.2 mm bore
301210	#3 Triple Outlet Angle Nozzle 4.8 mm bore
301211	#4 Triple Outlet Angle Nozzle 6.4 mm bore
301212	#5 Triple Outlet Angle Nozzle 8 mm bore
301213	#6 Triple Outlet Angle Nozzle 9.5 mm bore
301214	#6 90 degree Single Outlet Angle Nozzle 9.5 mm bore
301215	#8 90 degree Single Outlet Angle Nozzle 12.7 mm bore



Short Venturi Nozzle. alpha-blast short venturi nozzles are designed to increase productivity when blasting items with difficult to reach areas or containing a small surface area, ie railings, pipes, small fabrications, inside cavities etc.

By directing a concentrated stream of high velocity abrasive directly onto the work piece surface the blasting speed is increased as all the abrasive hits the work piece instead of large amounts missing the part.

Fitted with tungsten carbide liner and 50mm contractor thread aluminium outer jacket to protect whilst in use.

pt. no.	description
301178	#3 Tungsten Carbide Short Venturi 4.8 mm bore
301179	#4 Tungsten Carbide Short Venturi 6.4 mm bore
301180	#5 Tungsten Carbide Short Venturi 8 mm bore
301181	#6 Tungsten Carbide Short Venturi 9.5 mm bore
301182	#7 Tungsten Carbide Short Venturi 11 mm bore
301183	#8 Tungsten Carbide Short Venturi 12.7 mm bore



Water Jacket Nozzle. Abrasive blasting with expendable abrasives can produce huge amounts of dust. This is a problem for the environment and surrounding neighbours and workers.

You can easily reduce the dust levels by 80-90% by using the alpha-blast Water Jacket Nozzle. Simply connect a low pressure mains or tank water supply hose to the rear of the nozzle. The water mixes with the exiting air and abrasive mixture and forms a dust suppressing slurry.

Fitted with extremely durable tungsten carbide venturi liner encased in a tough aluminium jacket and fitted with 50mm contractor thread.

pt. no.	description
301311	#4 Aluminium Jacket Waterjet Nozzle 6.4 mm bore
301312	#5 Aluminium Jacket Waterjet Nozzle 8 mm bore
301313	#6 Aluminium Jacket Waterjet Nozzle 9.5 mm bore
301314	#7 Aluminium Jacket Waterjet Nozzle 11 mm bore



Standard Blast Hose. Standard heavy wall blast hose manufactured from a tough abrasive resistant natural rubber innerliner for maximum blast hose life. Anti static compound dissipates static from the hose.

Working pressure 10 bar/ Bursting pressure 30 bar.

Tough outer wrapping prevents damage to the hose even when used in the most demanding environments such as shipyards and construction work sites.

pt. no.	description
301042	Standard Blast Hose 13mm ID x 34mm OD - 20m
301372	Standard Blast Hose 19mm ID x 38mm OD - 20m
301043	Standard Blast Hose 25mm ID x 48mm OD - 20m
301045	Standard Blast Hose 32mm ID x 55mm OD - 20m
301047	Standard Blast Hose 38mm ID x 58mm OD - 20m



Light Weight Blast Hose. Reduce operator fatigue and increase productivity by using our Light Weight range of blast hoses. Approx. 30% lighter than standard hose this hose will allow operators to blast longer and reduce tiredness. Manufactured from a tough abrasive resistant natural rubber innerliner for maximum blast hose life. Anti static compound dissipates static from the hose.

Working pressure 10 bar/ Bursting pressure 30 bar.

Tough outer wrapping prevents damage to the hose even when used in the most demanding environments such as shipyards and construction work sites.

pt. no.	description
301049	Lightweight Blast Hose 13mm ID x 28mm OD - 20m
301222	Lightweight Blast Hose 19mm ID x 34mm OD - 20m
301050	Lightweight Blast Hose 25mm ID x 38mm OD - 20m
301052	Lightweight Blast Hose 32mm ID x 48mm OD - 20m
301405	Lightweight Blast Hose 32mm ID x 48mm OD - 40m
301054	Lightweight Blast Hose 38mm ID x 55mm OD - 20m



Moisture Separator. Always a problem for blasting operations is the presence of moisture in the compressed air supply.

This will lead to flash rusting on the blasted surface and clogging of the abrasive inside the blast pots. The alpha-blast moisture separator will remove a large amount of the moisture from the compressed air stream and prevent a lot of these problems. Containing no moving or replaceable parts this moisture separator will provide years of trouble and maintenance free service. The moisture separator is fitted with auto drain valve for automatic discharge of the collected moisture. Fabricated steel versions are ASME U stamped.

pt. no.	description
301095	Moisture Separator - 13mm (1/2") NB ports
301097	Moisture Separator - 32mm (1.25") NB ports
301103	Moisture Separator - 38mm (1.5") NB ports
301170	18 litre 250mm dia moisture separator
301218	18 litre 250mm dia moisture separator w/o legs
301370	4 Outlet Air Receiver



NOVA 3 Blasting Helmet. The RPB® Nova 3® series respirator combines breakthrough protection technology with advanced comfort & functionality, surpassing even the most rigorous industry standards and the demands of the most quality-conscious companies. Designed to optimize safety and productivity, and to minimize worker downtime, the helmet has many features that maximize its lifetime value.

Safety Above All Else. Rigorous safety standards not only protect valued workers, they also maximize efficiency, and maintain companies' hard-earned reputations as suppliers and employers. RPB® tested the Nova 3® using all conventional safety testing. Meets standards worldwide, including NIOSH, ANSI Z87.1 - 2010+, ANSI Z89.1 - 2012 Type 1 Class C. Then they parked a large sports utility vehicle on top of it. It's that uncompromising approach that characterizes RPB®'s design and the high standards and ethics they set in everything they do. Because jobs and lives depend on their products; RPB® make certain they won't let anyone down.

Comfortable kit - clear thinking. The RPB® Nova 3®'s design and engineering distributes the helmet's weight evenly across the head and shoulders for optimum comfort, practicality, and ease of worker movement, reducing fatigue. In addition, a ratchet-adjusted neck pad ensures your head is supported. The ingenious, fully adjustable, internal "Clever Fit Padding" (patent pending) allows helmets to be individually customized. This avoids discomfort and irritation, giving workers a clear head even under the pressures of their work. The padding has a second, vital, purpose. It's positioned to help absorb sound within the helmet, protecting workers' hearing. Padding is easily removed, and fully machine washable, making helmets hygienic and pleasant to wear even in the most extreme temperatures.

<u>pt no.</u>	<u>description</u>
	Nova 3 Respirator Assemblies
NV3-702-50	Nova 3 - Flow Control, Nylon Cape
NV3-702-51	Nova 3 - Flow Control, XL Nylon Cape
NV3-702-52	Nova 3 - Flow Control, Leather Cape
NV3-702-53	Nova 3 - Flow Control, XL Leather Cape
NV3-702-54	Nova 3 - Flow Control, XL Blast Jacket
NV3-702-55	Nova 3 - Flow Control, XXL Blast Jacket
NV3-703-50	Nova 3 - Cold Air Tube, Nylon Cape
NV3-703-51	Nova 3 - Cold Air Tube, XL Nylon Cape
NV3-703-52	Nova 3 - Cold Air Tube, Leather Cape
NV3-703-53	Nova 3 - Cold Air Tube, XL Leather Cape
NV3-703-54	Nova 3 - Cold Air Tube, XL Blast Jacket
NV3-703-55	Nova 3 - Cold Air Tube, XXL Blast Jacket
NV3-704-50	Nova 3 - Hot Air Tube, Nylon Cape
NV3-704-51	Nova 3 - Hot Air Tube, XL Nylon Cape
NV3-704-52	Nova 3 - Hot Air Tube, Leather Cape
NV3-704-53	Nova 3 - Hot Air Tube, XL Leather Cape
NV3-704-54	Nova 3 - Hot Air Tube, XL Blast Jacket
NV3-704-55	Nova 3 - Hot Air Tube, XXL Blast Jacket
	Nova 3 Replacement Respirator Capes
NV3-750	Nova 3 28" Nylon Cape
NV3-751	Nova 3 38" Nylon Cape
NV3-752	Nova 3 28" Leather Cape
NV3-753	Nova 3 38" Leather Cape
NV3-754	Nova 3 Blast Jacket Size XL
NV3-755	Nova 3 Blast Jacket Size XXL
NV3-759	Nova 3 Cape Cover Band
	Nova 3 Replacement Helmet Linings
NV3-729	Nova 3 Air Inlet Kit
NV3-730	Nova 3 Padding Connectors (Pair)
NV3-731	Nova 3 Side Padding Frames (Pair)
NV3-732-A10	Nova 3 Side Padding Foam, Size A-10
NV3-732-A15	Nova 3 Side Padding Foam, Size A-15
NV3-732-A20	Nova 3 Side Padding Foam, Size A-20
NV3-733	Nova 3 Side Padding Covers (5 pairs)
NV3-734	Nova 3 Head liner Kit - incl pad & clips
NV3-734-1	Nova 3 Head Liner Clips (Pack of 4)
NV3-735	Nova 3 Head Liner Foam Padding
NV3-735-1	Nova 3 Neck Pad
	Nova 3 Replacement Lenses
NV3-721	Nova 3 Inner Gasket
NV3-722	Nova 3 Inner Lens (Pack of 10)
NV3-723	Nova 3 Inner Lens Frame
NV3-724	Nova 3 Outer Lens (Pack of 50)
NV3-725	Nova 3 Tear Off Lens (Pack of 50)
NV3-726	Nova 3 Visor Kit (Incl. Hinge & Latch)
NV3-727/8	Nova 3 Mount Kit
NV3-727-2	Nova 3 Hinge Mount Kit
07-900	Nova 3 Adjustable Head Support
NV2021B	Nova 3 Breathing Tube



NOVA 2000 Blasting Helmet. Using the Nova 2000 you'll enjoy more comfort, less fatigue and improved productivity. This revolutionary helmet is in a class of its own, and has been designed to provide the blaster a comfortable and pleasant working environment with lighter weight and enhanced visibility. Once tried there is no going back.

Super tough helmet shell made of high density polyethylene, U.V. Stabilized and characteristically abrasion resistant.

Evenflow™ Air Distribution diffuses an even flow of breathing air throughout the helmet to cool head and face. Prevents lens from clogging.

ComfortZone™ lightweight pillow foam padding ensures the helmet always sits comfortably on head. The padding is easily removed for hygienic cleaning.

Large double lens provides optimum vision without irritating sideglare.

Rugged removable face frame mounted on an integral moulded hinge and secured with a super strong latch.

Multi layer sound deadening foam significantly reduces noise levels inside helmet.

Strongly attached cape fitted with 8 studs ensures cape stays on.

Abrasion resistant cape cover band seals the cape and prevents abrasive from entering the helmet

Optional low flow indicator allows the wearer to check that the airflow is sufficient to provide the necessary respiratory protection.

Safety Approvals include: NIOSH, AS/NZS1716:2000, ANSI Z87.1-03+, ANSI Z89.1-1997, EN:166:2002, AS/NZS1337:1992

<u>pt no.</u>	<u>description</u>
	Nova 2000 Respirator Assemblies
NV2000	Nova 2000 Respirator c/w NV20002, NV2016, NV2021
NV2000CT	Nova 2000 Respirator c/w NV20002, NV2021, 400-01
NV2000HT	Nova 2000 Respirator c/w NV20002, NV2021, 4000-20
NV2000LP	Nova 2000 Respirator c/w NV20002, NV2021, NV2015
NV2000XL	Nova 2000 Respirator c/w NV20002XL, NV2021, NV2016
NV2000XL CT	Nova 2000 Respirator c/w NV20002XL, NV2021, 4000-01
NV2000XL HT	Nova 2000 Respirator c/w NV20002XL, NV2021, 4000-20
NV2000XL LP	Nova 2000 Respirator c/w NV20002XL, NV2021, NV2015
NV2000L	Nova 2000 Respirator c/w NV2002L, NV2021, NV2016
NV2000L CT	Nova 2000 Respirator c/w NV2002L, NV2021, 4000-01
NV2000L HT	Nova 2000 Respirator c/w NV2002L, NV2021, 4000-20
NV2000L LP	Nova 2000 Respirator c/w NV2002L, NV2021, NV2015
	Nova 2000 Respirator Packages
NV2000PFC	Nova 2000 Respirator c/w NV2002, NV2021, NV2016, NV2029 & 04-900
NV2000PCT	Nova 2000 Respirator c/w NV2002, NV2021, 4000-01, NV2029 & 04-900
NV2000PHT	Nova 2000 Respirator c/w NV2002, NV2021, 4000-20, NV2029 & 04-900
NV2000PLP	Nova 2000 Respirator c/w NV2002, NV2021, NV2015, NV2035 & 06-100
	Nova 2000 Replacement Respirator Capes
NV2002	28" nylon respirator cape
NV2002XL	38" nylon respirator cape
NV2002L	28" leather respirator cape
NV2002SO	28" safety orange nylon respirator cape
NV2002XLSO	38" safety orange nylon respirator cape
NV2012	inner bib
	Nova 2000 Replacement Helmet Linings
NV2009/10	helmet lining kit size medium
NV2009/10SH	helmet lining kit size small
NV2009/10LH	helmet lining kit size large
NV2009	head dome size medium
NV2009SH	head dome size small
NV2009LH	head dome size large
NV2010	sidewings pair size medium
NV2010SH	sidewings pair size small
NV2010LH	sidewings pair size large
NV2010G	sidewings for wearers of glasses size medium
NV2010GSH	sidewings for wearers of glasses size small
NV2010GLH	sidewings for wearers of glasses size large
NV2038	velstuds pk 6
	Nova 2000 Replacement Helmet Parts
NV2003	window frame gasket
NV2004	visor kit
NV2006/7	air inlet assembly
NV2006/7CE	air inlet assembly with outlet for low flow indicator
NV2008	latch kit
NV2013	cape coverband
	Nova 2000 Replacement Lenses
NV2018	inner lens pk 10
NV2017	tear off lens pk 50
NV2031	outer lens pk 50



Astro Blasting Helmet. The Astro is the number one choice for an economy abrasive blasting helmet which also meets safety standards worldwide including Europe, USA and Australia. This lightweight yet robust helmet will reduce fatigue, reduce downtime replacing parts and increase your productivity.

Lightweight yet robust helmet. Less weight means less fatigue. The helmet only weighs 1.3kg.

Unique high strength Visor Strap keeps tension on the visor and is easy to use even when wearing blasting gloves.

Removable head suspension for ease of cleaning inside the helmet.

Sturdy removable face frame mounted on an integral moulded hinge and secured with a super strong latch.

Large flat lens provides excellent vision without distortion. Lower cost replacement lenses.

Durable nylon cape protects the wearers neck and upper body and the soft inner collar provides a comfortable seal around the neck.

Replaceable Cape Cover Band seals the top of the cape and stops abrasive entering the helmet.

All parts easily replaced with conventional tools.

Flexible breathing tube silences the incoming air supply and provides a quiet working environment.

Optional low flow indicator allows the wearer to check that the airflow is sufficient to provide the necessary respiratory protection.

Safety Approvals include: NIOSH, EN271, AS/NZS1716:2003

<u>pt no.</u>	<u>description</u>
	Astro Respirator Assemblies
02-800	Astro c/w 02-813, NV2021, NV2016
02-801	Astro c/w 02-813, NV2021, 4000-01
02-802	Astro c/w 02-813, NV2021, NV2015
02-803	Astro c/w 02-813, NV2021, 4000-20
02-900	Astro c/w 02-909, 02-817, NV2021, NV2016
02-901	Astro c/w 02-909, 02-817, NV2021, 4000-01
02-902	Astro c/w 02-909, 02-817, NV2021, NV2015
02-903	Astro c/w 02-909, 02-817, NV2021, 4000-20
02-900L	Astro c/w 02-919, 02-814, NV2021, NV2016
02-901L	Astro c/w 02-909, 02-814, NV2021, 4000-01
02-902L	Astro c/w 02-909, 02-814, NV2021, NV2015
02-903L	Astro c/w 02-909, 02-814, NV2021, 4000-20
	Astro Respirator Packages
02-800PFC	Astro package c/w 02-800, 04-900, NV2029
02-800PFC CE	Astro package c/w 02-800ce, 04-900, NV2029ce
02-802PLP	Astro package c/w 02-802, 06-100, NV2035
	Astro Replacement Respirator Capes
02-813	nylon cape
02-814	28" leather cape
02-812	cape coverband
02-817	28" nylon cape
02-818	38" nylon cape
NV2012	inner bib
	Astro Replacement Helmet Parts
02-804	visor kit c/w strap and screws
02-805	visor strap 5 pk.
02-806	cleat and screws
02-807	window gasket seal
NV2006/7	air inlet assembly
02-808	suspension clips 4 pk.
02-809	head harness for niosh approved astro
02-909	padded inner shell incl. location studs
02-910 S	inner shell padding size small
02-910 M	inner shell padding size medium
02-910 L	inner shell padding size large
	Astro Replacement Lenses
02-810	inner lens pk.10
02-811	outer lens pk.50
02-816	tear off lens pk.50



T100 Series Respirator. The RPB® T100 SERIES™ respirator is designed to offer light-weight, economical protection for workers in specialist industries including spray painting and chemical handling. It is a NIOSH approved type C respirator.

Over 100 years of market experience has gone into the development, ensuring optimum safety, quality and performance - reducing downtime. THE RPB® T100 SERIES™ comes in three versions. The T100™ (standard hood), the T100 PLUS™ (with extra length bib) and the T100 ULTRA™ (extra length bib, DuPont Tychem® SL Material with sealed seams).

Safety Above All Else. The T100™ supplied air respirator, manufactured from DuPont® Tychem® is a lightweight hood offering superior comfort compared with a conventional, tight full-face respirator. The hood also protects the entire head of the operator eliminating the need for a head sock. The wide angle lens offers optimum vision to set a clear view of the job.

The T100™ has been designed to be robust enough to reuse but cost effective enough to discard after use.

Applications

- Spray painting and coating applications
- Pharmaceutical Manufacturing
- Chemical handling

pt no.	description
07-101	T100 - Constant Flow Valve
07-102	T100 - Flow Control Valve
07-103	T100 - Cold Air Tube
07-110	Tychem® QC Replacement Respirator Hood
07-121	Head Suspension Mount
07-122	Hose Clamp for Breathing Tube (pk 5)
07-123	Peel Off Lenses (Pack of 50)



Radex Breathing Air Filter. The Radex Airline Filter System offers more capacity, more filtration and more versatility. Can be floor or wall mounted with same mounting bracket. Large capacity 6 stage filter cartridge removes moisture and particulates to 0.5 micron and odor from the compressed air providing the operator with clean breathable air. Large range of optional equipment allows the filter to be configured to meet specific breathing air requirements.

pt. no.	description
04-900	Radex Airline Filter Complete
04-901	Radex Airline Filter without Regulator
04-906	Radex Airline Filter Complete - 6 Operator



Cold Air Tube. The Cold Air Tube Assembly cools compressed breathing air coming into respirators by as much as 32°F (18°C). The Cold Air Tube helps to maximise worker comfort and increase productivity whilst working in hot climates. The Cold Air Tube is fitted with an airflow regulator which allows the user to adjust the outgoing air temperature.

Easy to disassemble and clean and manufactured from non toxic engineering plastic which provides an extremely robust construction to withstand the rigors of the workplace.

pt. no.	description
4000-01	Cold Air Tube Assembly



Hot Air Tube. The Hot Air Tube Assembly warms compressed breathing air coming into respirators by as much as 30°F (17°C). The Hot Air Tube helps to maximise worker comfort and increase productivity whilst working in cold climates. The Hot Air Tube is fitted with an airflow regulator which allows the user to adjust the outgoing air temperature.

Easy to disassemble and clean and manufactured from non toxic engineering plastic which provides an extremely robust construction to withstand the rigors of the workplace.

pt. no.	description
4000-20	Hot Air Tube Assembly



APF3100 Air Filter Cartridge. The APF3100 Air Filter Cartridge can offer extended filter life. Quality filtration materials which are manufactured to exacting standards ensure the most efficient and effective filtration in every cartridge. Materials with greater surface area provide increased absorption of water, oils and odors. The natural fibre felts very efficiently absorb oils from the air stream allowing air to flow through to the further stages of moisture and odor removal.

The APF3100 can multi fit many brands of Air Filter.

<u>pt. no.</u>	<u>description</u>
APF3100	Replacement Filter Cartridge



AFC100 Air Filter Cartridge. The AFC100 Air Filter Cartridge can offer extended filter life. Quality filtration materials which are manufactured to exacting standards ensure the most efficient and effective filtration in every cartridge. Materials with greater surface area provide increased absorption of water, oils and odors. The natural fibre felts very efficiently absorb oils from the air stream allowing air to flow through to the further stages of moisture and odor removal.

The AFC100 can multi fit many brands of Air Filter.

<u>pt. no.</u>	<u>description</u>
AFC100	Replacement Filter Cartridge



Breathing Air Line. This air line is specifically made for breathing air; it is not regular compressed air line. Quick couplings attached to hose with stainless steel swaged fitting. alpha-blast Breathing air line made in Australia and complies with AS/NZS1716 2299.

<u>pt. no.</u>	<u>description</u>
NV2028	25' Breathing Air Supply Line - RPB
NV2029	50' Breathing Air Supply Line - RPB
501022	10m Breathing Air Supply Line - alpha-blast
501023	20m Breathing Air Supply Line - alpha-blast
501024	40m Breathing Air Supply Line - alpha-blast



Blasting Suit. alpha-blast Blasting Suits are designed to protect operators from injury caused by ricocheting abrasives. Areas exposed to rebounding abrasives such as the front of the arms and legs are made from tough durable leather. The chest area, that is covered by the helmet cape, and the back of the blasting suit are made from heavy duty cotton material. This reduces the weight and prevents the operator becoming too hot.

A nylon/cotton version is produced for use in applications using softer abrasives such as plastic media, glass beads, walnut shell, bicarb etc.

Double layer poppers and velcro keeps abrasive out.

pt. no.	description
501004	Leather Blasting Gloves
501005	Blast Suit Leather Cotton Small
501006	Blast Suit Leather Cotton Medium
301207	Blast Suit Leather Cotton Large
501008	Blast Suit Leather Cotton Extra Large
501009	Blast Suit Leather Cotton Extra Extra Large
501010	Blast Suit Nylon Cotton Small
501011	Blast Suit Nylon Cotton Medium
501012	Blast Suit Nylon Cotton Large
501013	Blast Suit Nylon Cotton Extra Large
501014	Blast Suit Nylon Cotton Extra Extra Large

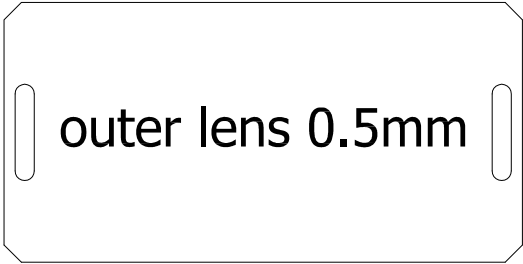


Hi-Vis Cape. The alpha-blast Hi-Vis cape was originally developed for blasters working on sites where the wearing of a high visibility jacket is compulsory. A great safety device also for use where there are many blasters working closely together and there is a likelihood of blasters accidentally blasting each other.

The Hi-Vis cape can be made to suit all types of blasting helmet and is available in a variety of colours.

Contact us for further details or specific requirements.

pt. no.	description
501027	HiVis Cape Yellow



outer lens 0.5mm

inner lens 1mm

Helmet Lenses. We produce a variety inner and outer lenses to suit many different blasting helmets.

Lenses are manufactured from 0.5 and 1mm thick high grade polycarbonate produced in Japan. Material is crystal clear and does not contain any waviness that causes operator fatigue.

Lenses are pre packaged into packets of 10, 20, 50 or 100 pieces per packet. Each lens is protected both sides by layer of protective PE material.

Contact us for further details or specific requirements.



Aluminium Cool Air Tube. The alpha-blast aluminium air cooler is used to cool the incoming hot air supply from the compressor prior to it entering the helmet. The cooler will reduce the temperature of the incoming air supply up to 32°F (18°C). This cooler incoming air ensures maximum operator comfort in hot climates. When the blaster is comfortable productivity increases.

Manufactured from a tough aluminium extrusion to provide extended life.

<u>pt. no.</u>	<u>description</u>
501034	Aluminium Cool Air Tube



SuperFlow Design. Conventional blast pots are fitted with 90 degree lower cone. The SuperFlow design is 120 degree steep lower cone. This increased angle of the lower cone provides a more consistent abrasive flow to the metering valve and ensures the pot is suitable for all abrasive types. Even the finest of abrasives ie, garnet, glass beads, sodium bicarbonate etc, will flow smoothly and uninterrupted.

Ease of Maintenance. Control and abrasive metering valving are mounted to bolt on/off flanges. The valves are quickly, easily and safely removed from the blast pot as and when maintenance is required. Only basic hand tools required for servicing. No more tiny hand hole to squeeze into to service pop up valve and seating ring. Removable bolt on seating ring housing permits full access to the blast pot interior. Replacing pop up valve and seating ring has never been easier.

Safety. Rigid support frame and over size wheels allows the SuperFlow blast pot to be easily moved and firmly positioned. With the fully removable seating ring housing confined space and access issues are totally eliminated.

Productivity. Achieve maximum production rates and faster throughput rates, all alpha-blast pots are fitted with full flow 1-1/4" valves, piping and fittings to maintain maximum blasting pressure at the nozzle.

Reliability. Durable high quality components are used throughout the pot assembly and the high flow Compact Remote Valve provides trouble free service. All valve service kits are inexpensive and easy to fit when servicing is required.



Blasting Pot. The alpha-blast range of blast pots combines our 80 years of experience in the blast cleaning industry to produce a high production, reliable and operator safe blasting system guaranteed to increase your productivity and profitability on every project.

alpha-blast intelligent design concepts and attention to detail provide a fully featured blasting system at real value for money pricing.

Productivity - Achieve maximum production rates and faster throughput rates, all alpha-blast pots are fitted with full flow 1-1/4" valves, piping and fittings to maintain maximum blasting pressure at the nozzle.

Cost saving - Metering exactly the right amount of abrasive to the nozzle ensures maximum productivity with minimal abrasive cost. The infinitely adjustable Abrasive Saver Valve allows precise abrasive flow rate to the nozzle to ensure no wasted abrasive.

Safety - Avoid serious accidents with blown off hoses. All hoses are connected with forged steel 4 bolt clamps connected to hose tails with locking grooves. This combination is almost impossible to break apart. All hose fittings are precision machined steel forgings, no cheap monkey metal fittings on this pot.

Low load height - alpha-blast pots are designed with the operators safety and comfort in mind. The low loading height reduces the possibility of back strain when manually refilling with abrasive. Heavy duty lifting lugs and over-size wheels permit easy lifting and relocating of the pot.

Reliability - Durable high quality components are used throughout the pot assembly and the high flow combination inlet/outlet remote control valve is protected by non-return valve to ensure trouble free service. All valve service kits are inexpensive and easy to fit when servicing is required.



FatBoy Blasting Pot. The alpha-blast FatBoy range of blast pots have been developed specifically to increase blasting productivity in open blast work sites using consumable abrasives. Available in three standard sizes, the FatBoy blasting pots are sized for 1, 2 or 4 metric tonnes of garnet abrasive. The pressure hold design of the system allows each operator to have independent control for starting and stopping blasting. An abrasive blow down function may also be incorporated if required.

To aid in transportation and relocation the Fatboy range is fitted with heavy duty lifting lugs and are skid mounted to permit moving by forklift.

Full flow pneumatic fittings used throughout the system ensure minimal compressed air pressure loss. This results in higher pressure at the nozzle and consequently higher blasting speeds and lower abrasive consumption.



Easy-Vac Recovery Unit. Work site clean up of spent abrasive and waste is easily accomplished with the Easy-Vac vacuum recovery system. As the unit is fully air driven no electric power is required. This is particularly useful on work sites where sources of potential explosion ignition must be eliminated such as oil refineries, oil and gas storage depots etc.

The vacuum recovery airflow is generated by a pneumatically powered eductor pump. The eductor pump is powered by the same air supply used for blasting. The recovered abrasive, dust and debris is pneumatically conveyed through recovery vacuum hose into a fully adjustable airwash that separates good reusable abrasive from waste and dust. After collection, the abrasive is stored in a 3mt abrasive storage hopper prior to recirculating to blast pot.

Before exiting to the atmosphere the recovery airflow is passed through a 2 cartridge TDF dust collector to capture the separated dust. Waste dust is deposited into a waste collector drum prior to disposal. The Easy-Vac is inexpensive to buy and is very simple to use and maintain as it contains no moving parts.



Portable Ventilator

The Porta-Blast Portable Ventilator is a convenient movable fan suitable for local ventilation of enclosed blasting areas. The unit can be placed directly in the work area or outside and ducted to the working area.

The Portable Ventilator is 500mm in diameter and is available with air driven or electric drive fan.

Single phase motor produces approx. 5,000cfm and three phase motor produces approx. 10,000 cfm.

A dust sock suitable for capture of nuisance dust is available as optional accessory.

pt. no.	description
801102	Portablast Ventilator Electric 5,000 CFM
801103	Portablast Ventilator Electric 10,000 CFM





www.scorpionblast.com



Operator friendly and environmentally safe, our Scorpion Blast cabinet is designed and built tough for high productivity continuous abrasive blasting or shot peening.

This innovatively designed blast cabinet combines a unique Tru Downflow dust collector, with a compact one piece blasting cabinet layout, to provide a blast cabinet with unparalleled performance and minimal floor space requirements.

The Scorpion Blast cabinet is available in suction and pressure configurations. A range of work handling and automation options permit customization to meet virtually any surface preparation, finishing and impact peening



www.blastechnik.com



**Blastechnik
Blastrooms**
Productivity by Design

We offer a selection of blastrooms designed and built for specific applications, including blastrooms

for blasting steel fabrications, ship blocks and wind towers; blastrooms for blasting with steel abrasives, plastic media, garnet and non ferrous abrasives, as well as portable, dual abrasive and combination blast and paint rooms.

Our range of high quality, dependable and innovative blastrooms provide a fully sealed blasting enclosure to perform abrasive blasting, grit blasting, bead blasting and surface preparation and finishing operations.



www.blastandpeen.com



Blast & Peen Abrasives. We sell a multitude of different blasting abrasives. However our speciality is the products we produce ourselves which are cut wire and zinc shot. Cut wire is produced from either carbon steel,

stainless steel, aluminium, copper or zinc.

If used for shot peening our cut wire is produced to meet all the common automotive and aerospace specifications.

Our carbon steel cut wire is an economical alternative to cast steel shot due to the greatly increased life of cut wire versus cast steel.